



IN LEAGUE REPORTER
LEAGUE OF WOMEN VOTERS OF ST. LOUIS
8706 Manchester Road, Ste. 104, St. Louis, MO 63144
314-961-6869
www.lwvstl.org
March, 2008

From the President:

Dear Members and Friends,

Your home is: your castle, your single biggest investment, where your heart is, where you hang your hat, etc. No matter how you define it, for most of us home is the center of our lives and any threat to this aspect of our domestic tranquility effects us deeply.

While the nation is currently awash with problems in the housing market, the issue of eminent domain is still with us; especially impacting those who can least afford to lose the roof over their heads. Does a government have the right to force us to sell our home for the benefit of private developers as well as the public good? In spite of a judicial opinion in the affirmative the issue continues to fester.

Charlene Dummett and the Housing Committee will present a panel discussion on "Eminent Domain and Affordable Housing" on April 5th at the Schlafly Library. **(See details on p. 3)** Let's plan to attend and learn what we can about this vital topic. It is a "Home, Sweet Home" whether it is leased or owned.

Doris Buzzell

Legislative Chair Paula Souza has resigned from the Board due to her relocation. We wish her well in her new location.

**2007 LWV ST. LOUIS
 BOARD OF DIRECTORS
 Officers**

Pres. Doris Buzzell
 1st V. P. Janice Dahl
 2nd V. P. Becky Clausen
 3rd V.P. Enid Tennebaum
 Sec'y. Mary Beth Reynolds
 Treas. Sue Dellbringge

Directors

Georgia Archibald
 Mary Ellen Brucker
 Marjorie Courtney
 Pam DeVoe
 Charlene Dummett
 Kathleen Farrell
 Eve Golden

CALENDAR

Units--See Page 2

Wed., March 5, 2008	6:00 p.m.	LWVSTL Board Meeting, League Office
Sat., March 8, 2008	9:30 a.m.	Climate Action Summit, Ethical Society, in lieu of EQ
Sat., March 8, 2008	9:00 a.m.	Education Committee, League Office
Thur., March 13, 2008	All Day	Legislative Day, Jefferson City (see MO Voter for info)
Fri., March 14, 2008	10:00 a.m.	International Relations, Main County Library HQ
Sat., March 22, 2008	2:00 p.m.	Theater Party, The New Jewish Theater (see pgs. 8 & 9)

****SAVE THE DATE** Saturday, May 10 for the LWVSTL Annual Meeting.**
 More info will be available in the next newsletter.

MARCH UNITS - EDUCATION

The March unit meetings will focus on the equity and opportunities given to special need students: physically impaired, behavioral/emotionally disturbed, ESL (English as second language) students, and those identified as gifted. Each one of us has a connection with one or more of these students. Come hear where we hope to go and help us with your ideas.

**For more information on unit locations,
please call the League office at 314-961-6869.**

UNIVERSITY CITY/CLAYTON

Tuesday, March 11

9:15 a.m. coffee

9:30 a.m. meeting

WEB. GROVES-K'WOOD DAY

Wednesday, March 12

9:30 a.m.

CHESTERFIELD/CREVE COEUR

Thursday, March 13

9:30 a.m. meeting

Noon salad lunch

WEBSTER GROVES/KIRKWOOD

Thursday, March 13

7:00 p.m.

LEAGUE OFFICE

8706 Manchester Road, Suite 104

314-961-6869

ST. LOUIS CITY UNIT

Saturday, March 8

10:30 a.m.

TRINITY CHURCH

Euclid and Washington

Corner of Euclid and Washington, one block east of Kingshighway, one block south of Delmar

Environmental Quality Committee



The EQ Committee will be meeting on the third Wednesday, Feb.20, to consider our future interests and actions. During the month of February, committee members will be explaining to Units our work to aid having cities and mayors sign the "Mayor's Climate Protection Agreement". The explanation should take 15 minutes or less. Opportunities will be provided for card signing. Cards will be sent to appropriate city Mayors. The Jan.

23 Webster -Kirkwood Journal had an article on its front page "What Does it Take to Go Green?_" It listed those cities who have signed and what they had done to implement the Agreement. Clayton, Kirkwood, Maplewood, the city of St. Louis, University City and Sunset Hills have done so. Webster Groves at its latest Council meeting further authorized its Task Force to plan how to work toward those goals that the plan suggests.

Your attention, please! There will be a Climate Action Summit meeting on Sat. March 8 at the Ethical Society from 9 a.m. to 1:00 p.m. Speakers will include Dennis Murphy, Kansas City Chief Environmental officer and developer of the Kansas City Action Plan and the person responsible for its progress so far. Linda Goldstein, Mayor of Clayton will talk about Clayton's actions. Also speaking are Tim Embree, St. Louis City, Jay Hashelder, Columbia Water & Light, Erin Noble, MO Coalition for the Environment & Colleen Sarna, Sierra Club.

EQ members are urged to attend this meeting which will replace the regular monthly meeting Register online at www.moenviron.org/climatesummit.asp or call 314-727-0600

This should be a worthwhile and fascinating day!

Betty Maag



The Housing Committee will be hosting an educational forum on “Eminent Domain and Affordable Housing” on Saturday, April 5th from 9:30 am to 12 noon at the Schlafly branch of the public library (225 North Euclid Avenue, St. Louis, MO, 63108)

(314-367-4120). This forum won't be covering current controversial aspects of eminent domain, just providing background information so people can be more informed in making up their own minds about this issue. Coffee, water, and rolls will be provided. Committee

people will be bringing the rolls/muffins, and will cheerfully accept any donations of food from folks who will be in attendance. The format will be a panel of 6 people, who will each give a 10 minute talk on their area of expertise, followed by a Q and A session. The panel will include:

- 1) Alderman Terry Kennedy, on the process of land use;
- 2) Jim Holtzman, Director, St. Louis County Community Development Agency;
- 3) Anthony Martin, Attorney and Ombudsman, State Of Missouri, on the rights of people affected by eminent domain;
- 4) Avis Landen-Hill, Habitat For Humanity, Family Support Manager of City of St. Louis, on affordable housing;
- 5) Bill Malek, President of Gateway Mortgage Corporation, on financing affordable housing;
- 6) City Community Development Agency – TBA.

For further information please call the League office at 314-961-6869



Remember the upcoming Municipal Elections are just around the corner on April 8, 2008. . The last day to register to vote is March 12, 2008.

We challenge LWV STL members to become Smart Voters and visit the state of the art Voter Service site. **We also challenge you to tell 5 people about the Smart Voter site brought to you by the League of Women Voters of St. Louis Information Service and Smart Voter of LWV California.**

Link from newly updated St. Louis website at www.lwvstl.org or visit www.smartvoter.org for state-of-the-art citizenship and 24/7 Election Information.



For the April 8, 2008 Municipal Elections:

Saint Louis County at www.smartvoter.org/.

Spread the word and encourage everyone to visit Smart Voter.
Learn who will be on the ballot including candidates, propositions
and the various candidate forums.

LWVSTL CANDIDATE FORUMS (as of 2-20-08)

SPRING 2008

Date	Time	Meeting	Location	Sponsor
Tuesday March 4	7-9 p.m.	Rockwood School Board Candidates	Crestview Middle School 16025 Clayton Rd., 63011	LWVSTL
Monday March 10	7-8 p.m.	Kirkwood School Board Candidates	Kirkwood Admin. Center 11289 Manchester Rd., 63122	LWVSTL
Tuesday March 11	7-9 p.m.	Wildwood Mayor and City Council Candidates	Wildwood City Hall 16962 Manchester, 63040	LWVSTL
Monday March 17	7-8:30 p.m.	Kirkwood Mayor and City Council Candidates	1st Presbyterian Church 100 E. Adams, 63122	LWVSTL
Monday March 17	7-8:30 p.m.	Ladue School Board Candidates	Ladue Horton-Watkins H.S. 1201 S. Warson, 63124	LWVSTL
Tuesday March 25	7-8:30 p.m.	Parkway School Board Candidates	South Middle School 760 Woodsmill Rd., 63011	LWVSTL
Wednesday March 26	7:15 p.m.	University City School Board and City Council Candidates	University City Library 6701 Delmar, 63130	LWVSTL



Happy Birthday to the League!

On February 14, the League celebrated its 88th birthday with a renewed commitment to making sure Americans vote in 2008!



2008 LWVUS Legislative Priorities : At the January LWVUS Board meeting, the LWVUS Board approved the following legislative priorities for 2008: Campaign Finance Reform, Civil Liberties, DC Voting Rights, Election Administration, Ethics and Lobbying Reform, Global Climate Change, Health Care Reform, and Tax Policy. Given the current political environment, it was determined that the priorities of the first session of the 110th Congress (2007) are relevant for the second session (2008). The addition of Tax Policy is in recognition that income inequality has grown substantially over the last several years and a comprehensive look at tax policy is possible. These priorities will be regularly reviewed and adjustments could be made should new opportunities for effective action emerge.

2008 LWVMO Legislative Priorities

MISSOURI IS IN TUNE WITH LWVUS . . . (taken from the LWVMO Legislative Bulletin)

Often we hear that Missouri is so different than every other state—but when it comes to issues Leaguers are concerned about, we're right on the money.

League of Women Voters of Missouri priorities are:

- Electoral process that is fair, accurate, efficient, accessible, accountable and uniform
- Tax policy that promotes financial stability
- Energy initiatives to reduce global warming

League of Women Voters of Missouri supports and continues to monitor:

- Access to quality, affordable healthcare, including mental health
- Equal access to quality public education for all Missouri children
- Children's safety and well-being
- Non-partisan court plan

The Missouri League publishes the Legislative Bulletin semi-monthly. If you would like to receive the bulletin by email, at no charge, send your name and email address to the League office at lwvmo@yahoo.com or call. (If you would the Bulletin mailed, there is a cost of \$10 to cover postage and handling.)

The Bulletin is also available on the Missouri League's website at www.lwvmissouri.org

STL IMMIGRATION CONSENSUS FILED

The LWVSTL International Relations Committee morphed into the Immigration Committee for the past year or more in order to take part in the national study on immigration and to guide the League here to a consensus. The national committee cut the time to two years which meant we had fewer meetings and fewer speakers than we would have liked, but we believe we gave all those people who wished to participate in the study a chance to learn and come to informed opinions. The national committee sent out reading lists, essays, articles in the National Voter, and participated in a listserv; this listserv offered many opinions from around the country on what could/should be done about immigration legislation.

The filing deadline has passed; with the speedy approval by Doris Buzzell and the board and help from Micki H., I filed our report in good time. National has asked all Leagues not to publish their individual reports as the only one that we will lobby from will be the final national consensus. This will be published in our ILR and no doubt in the National Voter after the national study committee has tallied the results. I do not envy them their task as every League in the country was allowed to send them a 150 word comment which seems to me almost too overwhelming to contemplate. I can say, however, that there was great agreement among the various units in STL on the immigration issues as proposed by LWVUS. We had about 75 members take part in our consensus.

Thank you to people who presented, timed, or took notes at the units: Rea Kleeman, Joy Guze, Leslie Lihou, Teresa Vietti, Mary Parker, Sydell Shayer, Jeanne Morrel-Franklin, Esther Clark, Mary Brown, Becky Clausen, and Ruth Ayers. A second thank you to the following for showing up at a special IR meeting where we compiled the data: Esther, Joy, Sydell, Leslie, Ruth, Janet Fales, and Barbara Elbrecht. The people at that meeting who organized our thoughts into the magic 150 words were Rea, Lois Bliss, and Becky who thankfully brought her laptop.

The national committee is to be commended profusely for all the work they have done, especially Carolie Mullan, the chair, and Xandra Kayden, the co-chair, who must have answered hundreds of emails during the study. I certainly did not agree with the wording of several of their questions; however, if anyone ever asks me to be on a similar national committee I know what my answer will be without even thinking about it. I have learned something about the huge topic of immigration and quite a bit about work by committee, and I am pleased to have chaired this vital League consensus for St. Louis.

Judith Smart, Immigration and IR Chair



Speakers Bureau

The League was well represented in January 2008 by **Ida West**, **Jill Schmidt**, and **Carol Portman** who visited voters at Blumeyer Center, home-schoolers (future voters!) in Eureka, and an ESL class at University City Public Library. Upcoming appearances will be in February and March – and we already have four requests for fall speeches prior to the November election.

Marjorie Courtney, Coordinator

Campaign for the League Underway

The organization's annual *Campaign for the League* is underway, beginning with the search for *Endorsers* and *Sponsors* who lend their names and funds to the effort.

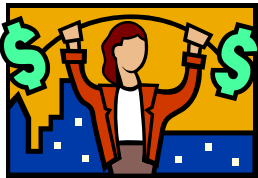
This campaign raises money for the League of Women Voters, the 501(c)(4) advocacy arm of the organization which works on key issues on which members have reached consensus. LWV-STL is funded only by dues and contributions, which are not tax deductible, and this Campaign reaches out to community contributors. Individuals and businesses in the Greater St. Louis area joined members in contributing over \$5,000 last year in the Campaign for the League. This year, with important issues of fair elections, healthcare, and environment on the League calendar, the goal for the campaign is \$10,000.



The Sponsor and Endorser list from last year already includes noteworthy community names such as Mayor Francis Slay and County Executive Charlie Dooley.

As a League member, you can help!

1. Consider becoming a Sponsor for the Campaign. To be a Sponsor, you give \$150 or more and your name appears on the letterhead as we seek contributions. The deadline is March 1.
2. Help us discover potential Endorsers and Sponsors we can approach. These are community influencers you know. Send in complete contact information if you have it. Send these names immediately!
3. Give us names of potential donors for our campaign list. These are individuals in the organizations and on the boards on which you serve or are members. Send these names by March 5th if you can. They will receive a general solicitation letter.



Let's get the word out to the community about the great work being done by the League of Women Voters of St. Louis!

New Sponsor on Board for "Yellow Umbrella Event"



The Ben & Jerry's Foundation has pledged \$1,000 towards the Yellow Umbrella Event, a re-creation of the Walk-less, Talk-less Parade of 1916, which was part of the women's suffrage movement. Several other grants for the event are pending, so the date (originally slated for late April) was postponed, possibly until early September.

The League of Women Voters of St. Louis is planning the event to bring attention to voting rights in 2008, and will host a half-mile and full-mile walk for members and the community with yellow umbrellas to re-create the historic parade in which women walked with yellow parasols in silence to portray their lack of a voice in government.

The event will culminate with speakers who will talk about voting trends and the importance of voting. Plans include involvement of college students from St. Louis University. Our thanks go to a communications class from SLU, who brought us the concept for this event in 2007 as part of an assignment! We are only too happy to pick up on this great idea.

In this presidential election year, with the LWV-STL launching important new voter service tools, it is a great time to bring our message of educated, empowered voting to the community. Watch your newsletters for our announcement of a date!

Dues notices will be going out in the mail soon. Annual dues for your LWVSTL membership are \$60 for individuals and \$80 for household memberships.



Do you know someone who would like to join the League? One of our members recently brought in 3 new members. When I asked her for her secret, she said, "I find people want to be a part of the League. All I had to do was ASK." **Have you asked anyone?**

If you would like a prospective member packet sent, call or email the office with the name, address, and phone number.

**League of Women Voters Information Service
20th Anniversary Theater Party**

(see full page ad on the next page)

The proceeds of this year's theater party will benefit our new SmartVoter website, www.smartvoter.org, which will take our recognized community voter service to new heights. You can be part of this exciting event by becoming a theater party sponsor. The theater capacity is 99, and we expect to fill every seat. You can be assured of a seat by becoming a sponsor today.

Single tickets at \$75 a piece will go on sale March 14. A waiting list for single tickets starts immediately on a first come first serve basis. Just call the League office at 314-961-6869 or e-mail your request to lwvmo@yahoo.com.

If you have attended in previous years, you know that the post-show reception will be a lavish affair. Expect beverages during intermission, door prizes of tickets for future New Jewish Theatre productions and a brief post performance discussion. To make your reservation, fill out the form below and send to the League office.

"Bluish" by The New Jewish Theatre

The Annual Theater Party Hosted by the League of Women Voters Information Service

2:00 -5:00 p.m., March 22nd, 2008 at the Jewish Community Center, 2 Millstone Campus Dr, St. Louis, MO

Name _____

Address _____

Phone _____

I will be a sponsor at the \$ _____ level.

I am unable to sponsor, but would like to make a contribution of \$ _____

Number of tickets needed _____ Seating is limited. Please indicate only the seats you will use.

_____ **\$3000-Diamond** 6 tickets

_____ **\$1000-Platinum** 6 tickets

_____ **\$500 - Gold** 4 tickets

_____ **\$300 - Silver** 4 tickets

_____ **\$150 - Bronze** 2 tickets

Make checks payable to the LWV Information Service. Sponsorships are tax deductible to the extent allowable by the law. **Return to:** League of Women Voters Information Service, 8706 Manchester Rd., Suite 104, St. Louis, MO 63144.

Annual Theater Party & Fundraiser At the Award-Winning New Jewish Theatre

**Benefiting
Smart Voter!**



**The League of Women Voters
Information Service presents:**

**Date: Saturday
March 22, 2008**

**Time: 2:00 p.m.
Reception to Follow**

**Place:
Jewish Community Center
2 Millstone Campus Dr.
St. Louis, MO 63146**

Sponsors:

Diamond	\$3,000	(6 tickets)
Platinum	\$1,000	(6 tickets)
Gold	\$ 500	(4 tickets)
Silver	\$ 300	(4 tickets)
Bronze	\$ 150	(2 tickets)

**Purchase your tickets by sending
your payment to the League office
with your sponsor level and the
number of tickets requested.
(or call the League office for more
information)**

8706 Manchester Rd., Suite 104
St. Louis, MO 63144

Phone: 314-961-6869
e-mail: lwwmo@yahoo.com
www.lwvstl.org

BLUISH...Atlanta playwright Janece Shaffer's impulse is to celebrate Southern Jewishness with all its particular charm and flavor. "*Bluish*" is a tender, funny and romantic play that crosses multi-generations in its look at generations struggling with concepts of relationships and family. Reviewers have said this play will take you on an enlightening path of self discovery.

"Bluish," Shaffer's new play, performed by St. Louis' top performing New Jewish Theatre, promises to be a winner! Reviews have called the romantic comedy a kind of combination of "My Big Fat Jewish Wedding" meets "Everybody Loves Raymond's New Jewish Wife." A meditation on the tricky duality of love, faith and loyalty, "Bluish" is a provocative cultural commentary that will evoke a variety of responses.

Tickets will be limited to this great performance, so get your reservations in early.

Smart Voter is the new interactive web platform for voter information being launched by the LWV-St. Louis in 2008. Help us support the new generation of voter information!